

CM230IR High Security Camera

The CM230IR forms part of a range of cameras from Conway designed to meet the challenges of environments such as custody suites, prison cells, elevators and public spaces where the installation could be susceptible to physical attack or interference. The unique design of the front panel gives exceptional protection for the camera and lens assembly. Additionally the flush-mounted front fascia minimises the risk of the unit being used to attach ligatures. This is important in applications where self-harm is a concern.

The CM230IR is manufactured with a high-quality steel frame that is designed to fit in irregular corners. The front panel consists of a machined steel plate with Lexan™ viewing window. The front panel is further strengthened by a sandwich of machined Acetal that is over 20mm thick.

The inclusion of IR LED illumination ensures that the camera can deliver high quality pictures regardless of light conditions and with the option of 940nm, the CM range is also a very discreet observation solution.

Installation and set-up are straightforward with the two-piece design. The installer firstly fits the frame of the camera and completes the cabling. The camera and front panel can then be offered up to the frame and adjusted for focus and angle. Another unique feature of the CM230IR is the amount of camera angle adjustment that can be achieved. This means the camera can be installed in the room without compromising the room coverage required. As the camera is housed in its own spherical enclosure the chances of damaging the unit during installation and configuration are minimal. Once this is done the installation is completed by fitting the front panel using stainless steel security screws.

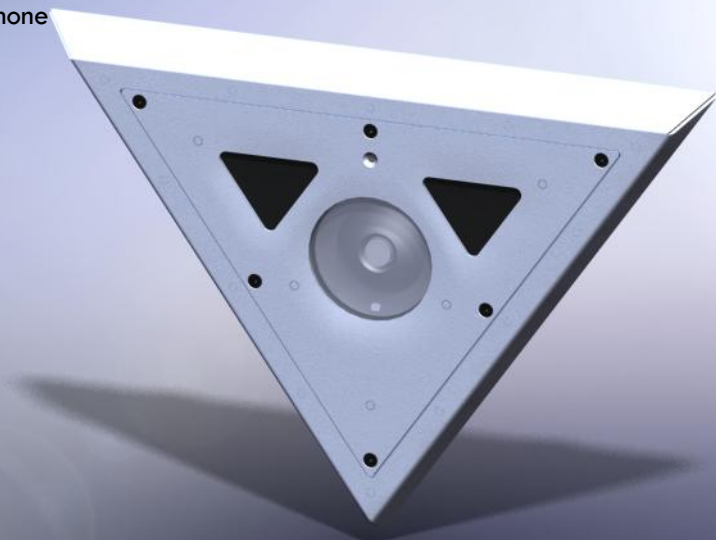
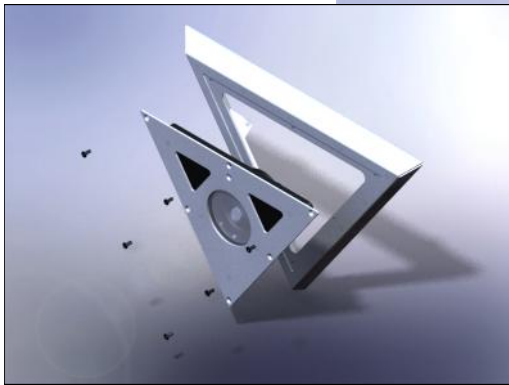
The option of a microphone fitted in the housing completes a comprehensive security package.

Typical Applications

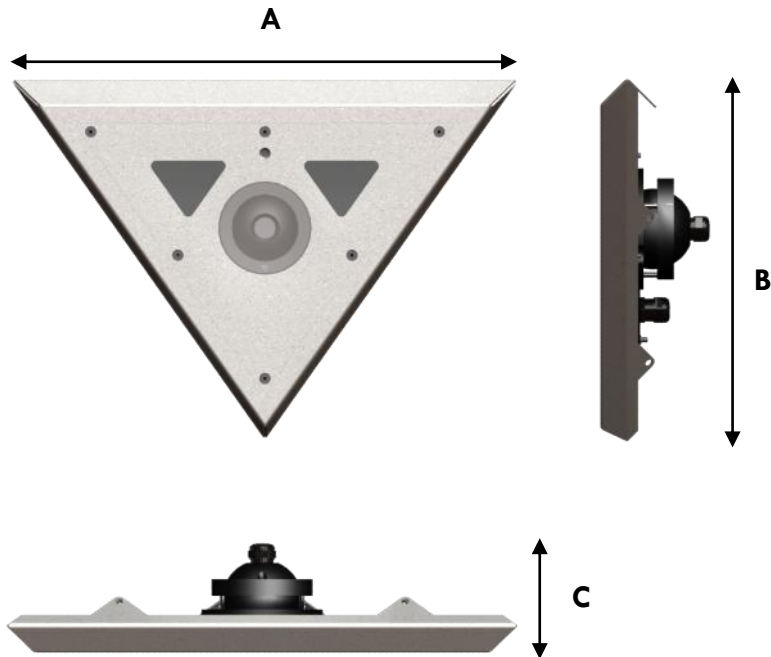
Custodial Suites ● Elevators ● Psychiatric Wards ● Interview Rooms ● Stairwells ● Medical Observation Rooms ● Workshops ● Barns.

Models

CM230IR	Day/night camera 2.5mm lens
/A	Optional integrated microphone assembly



- Corner mounting
-
- Vandal resistant
-
- Anti-ligature design front panel
-
- Minimal self-harm potential
-
- Angled design for maximum room coverage
-
- Unique camera mount for maximum angle adjustment
-
- Lexan™ screen
-
- IR illumination
-
- Photocell IR switching
-
- Anti-tamper fixings
-
- Mounts in irregular corners
-
- Manufactured to weatherproof standard BS.EN60529 Level IP65
-
- Audio (optional)



Dimensions (mms)

A	370
B	266
C	81

Special Finishes

The CM230IR is available in a variety of special paint finishes. It can also be produced with a brushed aluminium or stainless steel front plate to suit environments such as elevators.

Technical Data		CM230IR
Camera		
Sensor	1/3" HAD CCD. Colour/Mono	
Sensitivity	0.35lux @ f1.2 (colour) 0.21lux (mono)	
IR Cut Filter	Yes	
Lens	2.5mm standard	
Horizontal Angle of View	106°	
Resolution	550tvl	
Illumination		
LEDs	Osram™ High power LEDs	
Wavelength	850nm or 940nm	
Mechanical		
Main Construction	Steel frame	
Front Plate	Machined steel facia with Acetal inner	
Screen	Clear Lexan™	
Fixings	Anti-tamper, stainless steel	
Environmental Standard	IP65	
Operational Range	-10°C - +50°C	
Weight	4.5kg	
Finish	Ral9010 powder coat	
Power Consumption	10 watts	
Audio (optional)	Integrated microphone providing line level audio.	

Related Products

High Security Cameras
CM280IR, CM260

Internal Vandal Resistant Housings
IHC4, IHW4, IHW4/ck

External Vandal Resistant Housings
EHC4, EHW4, EHW4/ck, VEH4

Exclusive Australian Representative



PO Box 5024, Minto, NSW 2566
Tel 1300 798106
info@techniche.com.au
www.techniche.com.au



Conway Security Products Limited
Seymore House, Copyground Lane, High Wycombe, Buckinghamshire HP12 3HE
Tel +44 1494 461373
Fax +44 1494 531685
sales@conway-cctv.co.uk
www.conway-cctv.co.uk

Datasheet D51-3
February 2009