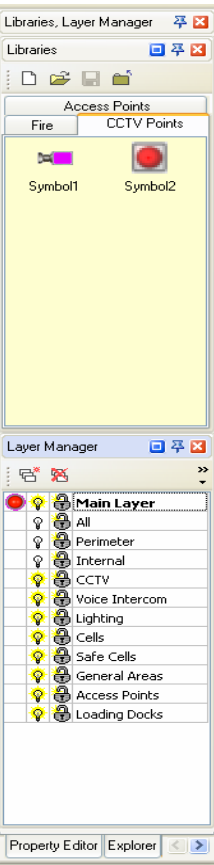
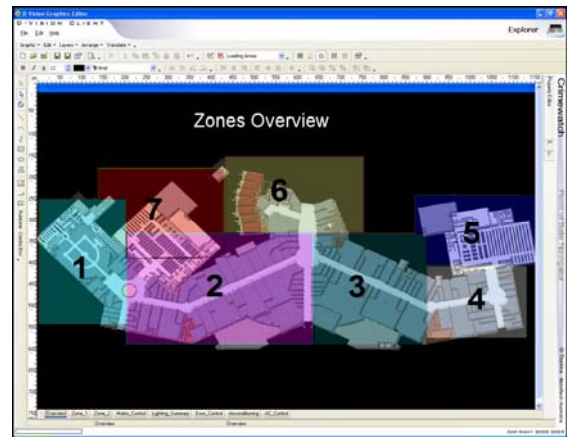


## D-VISION® HMI (Human Machine Interface)

Graphical HMI Technology allows you full access to all functions in your system, integrating disparate systems into one central reporting and control solution.

### How Does It Work

D-Vision integrates with Digital Video Recorders, Surveillance Equipment, Alarm Systems, Detection Systems & Other Electronic Devices and Security Systems to compile Data according to custom programmable filter parameters.

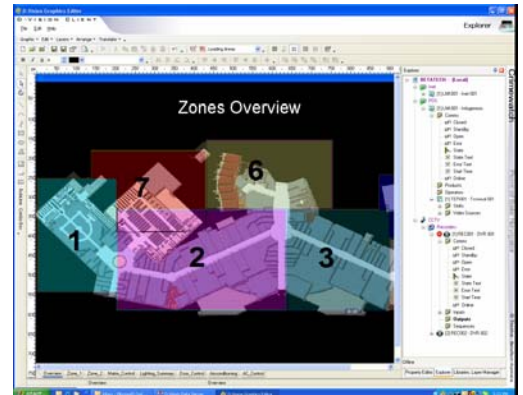


### D-Vision® Server

The server application runs as a Windows service and interacts with the licensed devices. D-Vision correlates all disparate data into a central SQL database via secure transports, options exist for redundant databases to ensure data integrity and availability.

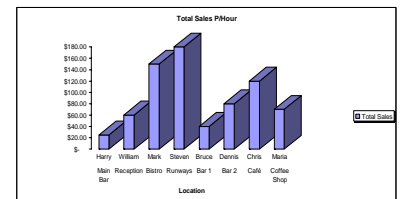
### D-Vision® Client Software

The client software runs as a Windows application, on start-up a client is registered to a server or multiple servers simultaneously presenting operators with synchronised data from all connected servers.

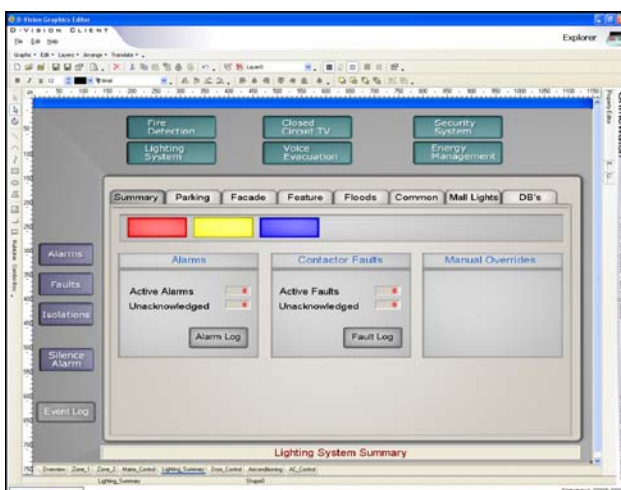


The D-Vision client presents custom graphical alarm information that enables users to control multiple systems from a single point and correlates all data for management reports and system health monitoring.

- ✓ Log activity and uptime to produce serviceability reports
- ✓ Resolve disputes
- ✓ Track and monitor system performance
- ✓ Control staff activities and shift duties
- ✓ Monitor service levels and performance
- ✓ Get notified of significant events via SMS or e-mail client
- ✓ Future proof system to take advantage of latest technology
- ✓ Upgrade system features with ease



Sample Graph



### D-Vision Health

To ensure total system uptime and reliability, the system Monitors the “health” of connected devices, this information Is logged and reactive ensuring automatic reporting should an error occur within any of the systems.



### Typical Applications

Convention Centers, Stadiums, City Surveillance Systems, Traffic Management, Building Management & Monitoring, Correctional and Detention Facilities, Cash Centers, Airports, Visitor Management or any application where system integration and cross platform functionality is required for operational purposes.



Custom applications as per clients' requirements include multi-vendor system integration, Lighting & AHU Control, CCTV System Control, Multi Site Integration & other specialized services.

### Technical Specifications



Hardware requirements for the PC on which the D-Vision Server is to be installed are as follows:

Hardware	Recommended
Processor	Pentium 4 2.40 GHz or better
RAM	512 Mbyte or more
Hard Disk	50 GB or more
Display	1024 X 768 or better
Mouse	Required
CD ROM	Yes
Dual Monitor	Preferred
Network Adaptor	Yes



#### Software Requirements

The server and client PC's must be preloaded with Windows. This may be Windows 2000 or Windows XP. For systems with more than 1 D-Vision client software, operating via a network, the PC's must have networking software for TCP/IP installed.

### Specialized Interfaces



- DirectX DVR
- ADO
- .Net
- OPC
- SQL
- XML

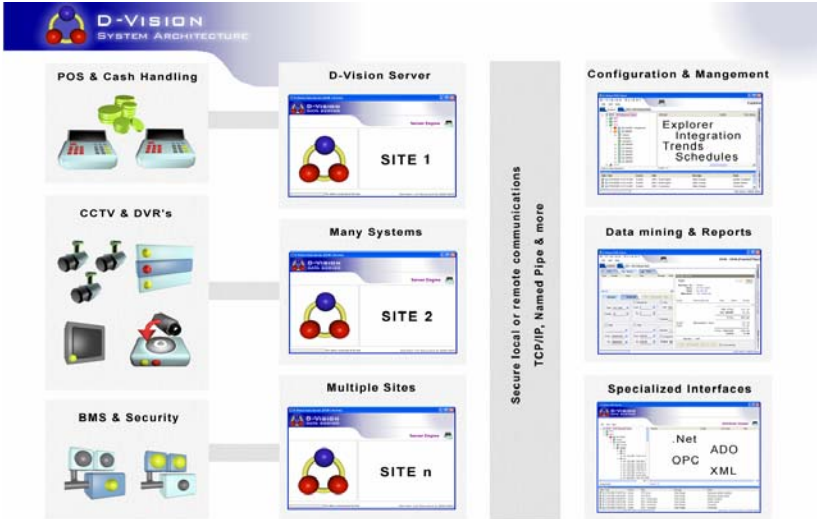
### Typical Device List



- Geuterbruck DVR's
- Geuterbruck VMD
- Dallmeier
- Honeywell Fusion
- GE Interlogix / Kalatel



- March Networks
- Traffic Management Systems
- Ticketing Systems
- Visitor Management Systems
- Andover TAC
- Modbus
- Betatech VideoBloX
- Panasonic Keyboards
- Pelco Keyboards
- Perimeter Fence Systems
- Electric Fence
- Fire Detection Systems
- Access Control Systems



Typical Architecture

Distributed by:

